



PrimeUSA Scales
"Best Scale at the Best Price"

Economy 2.0

Completely wireless fork scale with basic functions

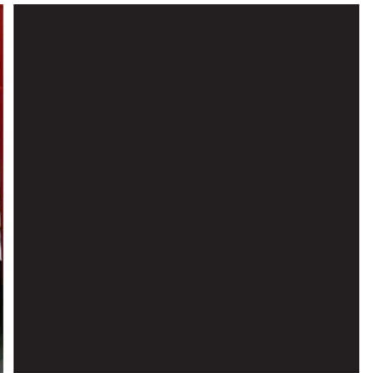
BENEFITS

- Basic functions, best buy in the business
- 5 Minutes installation
- Completely wireless: no cabling
- Digital calibration
- Bluetooth signal transfer
- Fork LED's indicate battery status
- Tested 1,000,000 cycles at 125% of capacity



Best price

Plug & weigh



ECONOMY LINE



PrimeUSA Scales
"Best Scale at the Best Price"

Economy 2.0

FUNCTIONS

- Automatic and manual zero correction
- Gross/net weighing
- Automatic tare and manual tare weight entry
- Totalling with sequence number
- Data output for printing
- Power management user menu
- Error messages in display
- Auto shut-of function for optimal battery life
- Overload protection 200%

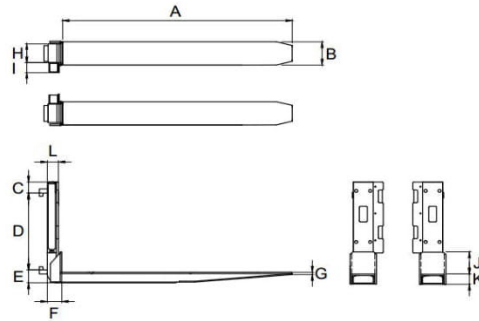
STANDARD SPECIFICATIONS

- Capacity 2.500 kg, FEM 2A
- Graduation 2 kg steps from 0 - 2.500 kg
- System tolerance 0.2% of the scale capacity
- Display LCD, digit height 18 mm, adjustable backlight
- Signal transfer Bluetooth, class 1
- Controls 4 function keys, on/of key
- Protection class IP65 / NEMA 4

POWER SUPPLY

- Easily exchangeable, ergonomic and robust battery pack on each fork, containing 4 rechargeable D-cells. A charger is included.
- Indicator powered by 4 AA-batteries
- The system has an auto shut-of function for optimal battery life
- The operator can customize the power settings in the 'Power Management' menu on the indicator

DIMENSIONS IN MM



	2500 kg*
	FEM2
A	Fork length 1150
B	Fork width 133
C	Height above carriage 68
D	Height carriage 407
D"	Distance claws 418
E	Fork drop** A/B 76/152
F	Distance between carriage and stop plate 80
G	Thickness of fork tip 15
H	Width of fork base 100
I	Width of battery pack 55
J	Height of stop plate 90
K	Fork height 58
L	Thickness fork 59
	Weight, per fork 67 kg

Tolerance +/- 2 mm

* Capacity specified at load centre point 500 mm

** Specify fork drop type upon order, tolerance dimension +/- 5 mm



• ISO 9001
• ISO 14001

OPTIONS*

- Thermal (6V) printer
- Extra set of rechargeable fork battery pack
- Rechargeable AA-batteries for the iForks indicator
- FEM 2B forks
- Indicator on adjustable RAM support

INDICATOR 2100

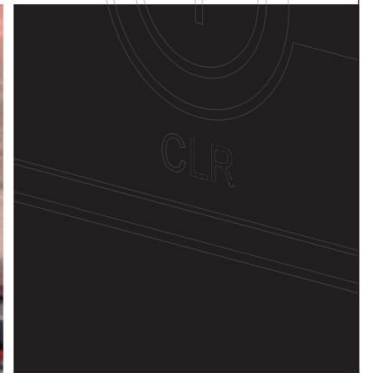
Weight indicator with basic scale functions

BENEFITS

- Developed for mobile use
- Compact, robust and shock proof
- Bluetooth data transfer
- Integrated voltage converter
- Dust and watertight



Top quality
Connects to WMS



INDICATOR 2100

FUNCTIONS

- Automatic and manual zero correction
- Gross/net weighing
- Automatic tare by push button
- Tare entry by cursor function
- Totalling with sequence number
- Error messages in display
- Power supply to printer switched on and off by indicator
- Automatic shut-off function, defined by parameter setting
- Low battery indication



STANDARD SPECIFICATIONS

- | | |
|---------------------|--|
| ▪ Display | digital |
| ▪ Segments | LCD, digit height 18 mm |
| ▪ Graduation | 0.1, 0.2, 0.5, 1, 2, 5, 10, 20 or 50 kg (see specifications weighing system) |
| ▪ Housing | plastic (ABS) |
| ▪ Bracket | steel |
| ▪ Colour | red (RAL 3000) |
| ▪ Protection class | IP65 |
| ▪ Power supply | 12V (230V for stationary applications) |
| ▪ Power consumption | 18 mA |
| ▪ Dimensions | excl. bracket: 60 x 77 x 182 mm |

TS LFT INDICATOR 2100 EN EU rev.12.12.19 Changes reserved

PREMIUM OPTIONS*

- Printer output to thermal or matrix printer
- Bluetooth or WLAN output

OPTIONS*

- RS232 output for cable connection to truck terminal
- Multirange graduation (see specifications weighing system)
- Explosion proof version (EXi)

* The use of options may change related specifications