

LEBK

integrator



Label Printing Scale

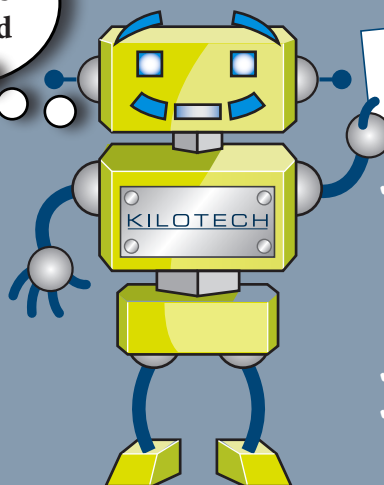
Ready, Set, Go!

Weigh • Print • Process



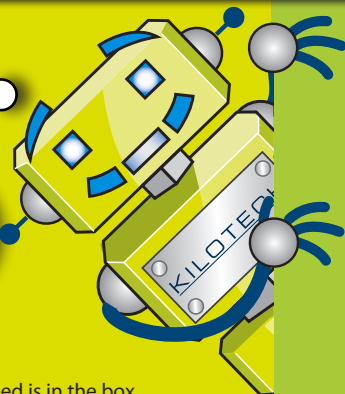
This is why you want it!

Peace
of Mind



- ✓ We tested the printer to print over 500,000 labels in 2 months, which is more than your average operator uses in 5 years!
- ✓ 2 year warranty
- ✓ Clone your scale to secure your data

Ready, Set,
Go! Yes, it's
that easy!



- **Unpack**
 - ✓ Everything you need is in the box including a free roll of labels installed
- **Install**
 - ✓ Download your software at www.kilotech.com
- **Download**
 - ✓ Generate PLU data and download to the scale
- **Print**
 - ✓ Wide variety of predefined labels! Just choose one!
- **Stuck?** Scan the QR barcode on the scale for direct access to online training videos or go to www.kilotech.com/Le3k



Out of the Box Features

- 126 Speed keys because you can never have too many!
- Dual interval 30 kg or 60 lb capacity – weigh big or small, this scale does it all!
- Preprogrammed to use Kilotech gap labels
- 4 modes for programming PLU's: kg, lb, 100g, pcs
- Easy to understand reporting templates
- Built-in Efficiency with the features that you use daily
 - Prepack mode
 - Autoprint mode
 - Save mode

KILOTECH

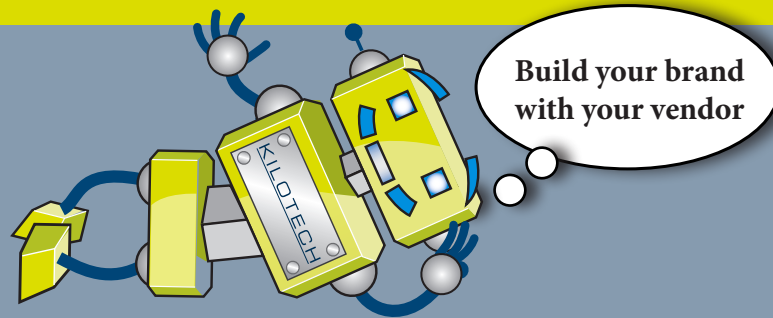


We field tested the printer to print over ½ million labels in 2 months, which is more than your average operator uses in 5 years!

The business-minded scale:

Centralized software application to set up or make changes to your scale(s). Ensure consistency amongst terminals and centrally collect data for reporting. Customize your reports to contain all the information you require to make business decisions.

20 different preprogrammed barcode formats
(see Manual Addendum for details)



Why you need your authorized dealer!

Use the full potential of the scale to maximize your store's brand

- Bring your branding to the next level with customized labels:
 - ✓ Add your Logo and additional images
 - ✓ Store up to 32 modifiable label formats
 - ✓ Cooking instructions, discounts, allergy warnings, images, QR, packed for/by, country of origin...
 - ✓ Many barcode symbologies are available (see images on the left)
- Add additional languages: Print in Swahili, Korean, Spanish and more
- Automate your data:
 - ✓ Schedule your PLU update
 - ✓ Synchronize your data - Integrate and update your store's product data: reads from SQL, CSV and FTP
- Clone your scale in minutes
- Make your scale Fort Knox - Your authorized vendor can set up your system for a complete scale lockdown with additional passwords and protection, bringing it to the next level
- Need more data on your staff activity? Have your authorized vendor set up your User Controls for detailed salespeople / clerk information
- Fast program keys to access frequently used features:
 - ✓ Label and date formats
 - ✓ Barcode formats and flags
 - ✓ Shelf life
 - ✓ Sales reports
 - ✓ Unit price editing
 - ✓ Manual and auto discount programming
 - ✓ Customized Tare key
- We grow with you: add on scales as you need with one central control

LABELS



Coffee-Rubbed Steak
Ancho, chili powder, coffee, beans, brown sugar, smoked Spanish paprika, dried oregano, black pepper, coriander, mustard, chile de árbol, red pepper flakes, ground ginger, kosher salt, vegetable oil
Preheat oven to 400°. Heat oil in a large skillet over medium-high. Brown steaks for 2 minutes on each side. Transfer skillet to oven; cook for medium-rare, about 5 minutes. Transfer steaks to a cutting board; let rest 1

Allergy Warning: peanut; tree nuts
Packed on: JA-17-17 Best before: JA-21-17
Unit price: \$5.69/kg Weight: 1.215kg
You save \$ 2.24 Total price \$ 6.91

www.kilotech.com
514-352-0121

Sear your brand into your consumer's minds

- Kick-ass big logo-show your brawn!
- Your company's slogan/tagline
- Product name

Recipe for perfection

- Print ingredients in English & French
- Allergy warnings
- Cooking instructions

The essential nitty gritty details

- CFI compliant date formats + HPAQ
- Product relevant dates and print options
- Price barcode in the format your store needs
- Show the amount your client can save

Total VIP points collected: 2145
VIP points collected with this transaction: 12



Vrieburn, Ooveastad
Country of Origin: Canada

Eric Johnson Had the pleasure to serve you

Let us know what you think
and you will be entered into a contest
for a \$500 gift card

Your personal code is:

125 254

Packed by:
Prairie Meats

The fundamentals

Let's bring back the personal touch!

- Integrate your store branding into your label
- Print the fonts you want to use, the store name, address and details that you find important
- Your clients want local products: make sure to mark it

Nutrition Facts

Amount	% Daily Value
Tenor	% valeur quotidienne
Calories / Calories 350	
Fat / Lipides 2.0 g	3 %
Saturated / Saturés 2.0 g	20 %
Trans / Trans 2.0 g	
Cholesterol / Cholestérol 10 mg	
Sodium / Sodium 150 mg	7 %
Carbohydrate / Glucides 23 g	8 %
Fiber / Fibres 1 g	4 %
Sugars / Sucres 16 g	
Protein / Protéines 1 g	
Vitamin A / Vitamine A	8 %
Vitamin C / Vitamine C	10 %
Calcium / Calcium	4 %
Iron / Fer	4 %
Potassium / Potassium 300 mg	7 %

NFT
Canada

Nutrition Facts

Amount Per Serving	% Daily Value*
Calories	350
Total Fat 2.0g	3%
Saturated Fat 2.0g	10%
Trans Fat 2.0g	
Cholesterol 10mg	3%
Sodium 150mg	6%
Total Carbohydrate 23g	8%
Dietary Fiber 1g	4%
Total Sugars 16g	
Includes 12g Added Sugars	24%
Protein 1g	
Vitamin D 20mcg	4%
Calcium 20mcg	2%
Iron 17mg	90%
Potassium 310mg	9%

*The % Daily Value(DV) tells you how much a nutrient in a serving of food contributes to a daily diet. 2,000 calories a day is used for general nutrition advice.

NFT
USA

Just the Nutritional facts!

Out of the box

13 formats including 1 Nutritional Facts Label (1 CDN, 1 USA), 3 size gap labels and store up to 32 modified (customized) label formats.

Commodity Line 1
Commodity Line 2

Packed on: JA-01-00 Sell by: JA-01-00 Weight/Poids: 1.000 kg

2 012345 008991 8.99 \$/kg Price/Prix TOTAL \$

Store Name Line 1
Store Name Line 2

Commodity Line 1

Ingredients: TEXT1 1AbcdeFghijklmnopqrstuvwxyz123456789 012345678112345678912345678912345678912345678901 2AbcdeFghijklmnopqrstuvwxyz12345678912345678901 123456123456789123456789123456789123456789123456 789012AbcdeFghijklmnopqrstuvwxyz123456789012 3456789012345678912345678912345678912345678901 2AbcdeFghijklmnopqrstuvwxyz12345678912345678901 123456123456789123456789123456789123456789123456 789012AbcdeFghijklmnopqrstuvwxyz123456789012 3456789012345678912345678912345678912345678901

Packed on: OC-18-18 Sell by: OC-18-18 Weight/Poids: 1.000 kg

2 012345 008991 8.99 \$/kg Price/Prix TOTAL \$

Store Name Line 1
Store Name Line 2
Store Name Line 3

Commodity Line 1

Price: 8.99 \$/kg Weight: 1.000 kg

2 012345 008991 8.99 TOTAL \$

Packed on: OC-18-18 Best Before: OC-18-18

Store Name Line 1
Store Name Line 2

Commodity Line 1
Commodity Line 2

Ingredients: TEXT1 1AbcdeFghijklmnopqrstuvwxyz123456789 012345678112345678912345678912345678912345678901 2AbcdeFghijklmnopqrstuvwxyz12345678912345678901 123456123456789123456789123456789123456789123456 789012AbcdeFghijklmnopqrstuvwxyz123456789012 3456789012345678912345678912345678912345678901 2AbcdeFghijklmnopqrstuvwxyz12345678912345678901 123456123456789123456789123456789123456789123456 789012AbcdeFghijklmnopqrstuvwxyz123456789012 3456789012345678912345678912345678912345678901

Packed on: OC-18-18 Best Before: OC-18-18

2 012345 008991 8.99 \$/kg Price/Prix TOTAL \$

Store Name Line 1
Store Name Line 2
Store Name Line 3

Customized example

Concentré de protéine de soja, colorant caramel
huile de canola, gluten de blé, arômes naturels,
gomme végétale modifiée, isolat de protéine de soja,
dextrose, colorant caramel, carraghénine, Gomme de
caroube, poudre de betterave.

Your logo here

Pongez sur la ligne

THE HUNGRY HUMAN

Packed on: 12/SE/16 Best before: 17/SE/16

Weight: 0.180kg

Unit price: \$4.44/kg

Total Price \$ 0.80

Concentré de protéine de soja, colorant caramel
huile de canola, gluten de blé, arômes naturels,
gomme végétale modifiée, isolat de protéine de soja,
dextrose, colorant caramel, carraghénine, Gomme de
caroube, poudre de betterave.

THE HUNGRY HUMAN
Greenfield, Quebec

Packed on: 08/SE/16 Sell by: 13/SE/16 Weight/Poids: 0.160kg

2 012345 000716 \$4.44/kg Price/Prix TOTAL \$ 0.71

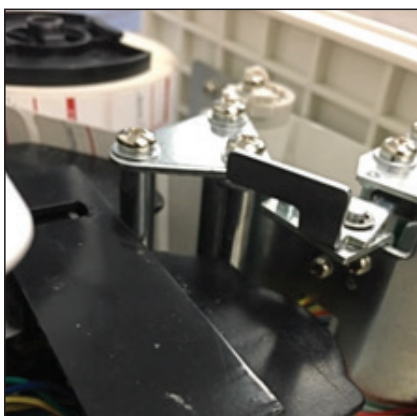
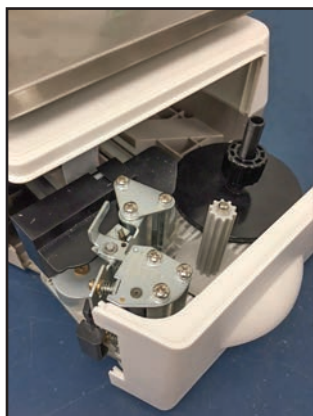
consectetur adipiscing elit. Proin commodo pharetra mi
egit consequat. Suspendisse porta accumsan purus, vel
varius justo laoreet et. Suspendisse ante urna, lacinia
quis egestas sit amet, congue ac ipsum. Vivamus id
rhoncus nunc. Integer leo tellus

THE HUNGRY HUMAN
Greenfield, Quebec

Packed on: 28/SE/16 Sell by: 09/OCT/16 Weight/Poids: 0.155kg

2 200000 000356 \$2.26/kg Price/Prix TOTAL \$ 0.35

*Not standard label. Customized labels used to demonstrate the scale's capabilities.



Not just for instore: Caterers and Manufacturers can reap the results using this scale:

- ✓ Create labels according to multiple client's specifications without having to reprogram
- ✓ Produce a detailed batch report for billing and record keeping
- ✓ Accumulative transactions
- ✓ Z reports
- ✓ Generate shipping manifest
- ✓ Create stock orders and item, sales, operator and inventory reports

Packing List:

ABC packaging

Customer:

Sir Loin

123 ABC Street

Montreal, QC

A1B 2C3

Prepared by: John Smith Transaction# 1234565
Date: 13/NOV/11 Time: 08:59:34

PLU #	Name	Weight /Pcs	Price /Unit	Price
1	Coffee-Rubbed Steak	2.575kg	\$0.25/kg	0.64
2	Lorem Ipsum dolor sit amet	2.575kg	\$2.25/kg	5.79
1	Coffee-Rubbed Steak	2.575kg	\$0.35/kg	0.93
2	Lorem Ipsum dolor sit amet	2.575kg	\$2.25/kg	5.79

Total Price \$ **13.15**
Total Weight **10.300kg**

Report of Sale List

Filter

Time Range: From 2000/1/1 00:01 To 2016/10/6 10:43:12

Bill Report

Total Income	Total Tax	Total Cost	Total Profit	Total Discount and Rounding	Total Service Fee
2196.55	0.00	0.00	2196.55	0.00	0.00

Bill Count: 541 Card Pay: 0.00 Other Payment 1: 0.00 Other Payment 2: 0.00 Other Payment 3: 0.00 Total Cash: 2196.55

PLU Total Report

Type	Add-up Time	Total Count	Total Weight	Total Income	Total Tax	Total Cost
Sale	507	73 pcs	1575.351 lb	2196.55	0.00	0.00
Unconfirmed	2	0 pcs	2.903 lb	4.64	0.00	0.00

PLU List Report

PLU No	PLU Name	Type	Add-up Time	Total Count	Total Weight	Total Income	Total Tax	Total Cost
1	RAMBUTAN	Actual Sales	391	0 pcs	1510.78 lb	1591.71	0.00	0.00
		Unconfirmed	2	0 pcs	2.903 lb	4.64	0.00	0.00
2	MANGOSTEEN	Actual Sales	93	0 pcs	64.584 lb	66.03	0.00	0.00
		Actual Sales	93	0 pcs	64.584 lb	66.03	0.00	0.00
9999999	T-Count PLU	Actual Sales	73	73 pcs	0.000 lb	538.81	0.00	0.00
		Sale	73	73 pcs	0.000 lb	538.81	0.00	0.00

PLU No	PLU Name	Last Stocktaking	Amount In Stock	Unit No	Unit Name	<->Spoilage	<+>Amount Balance	<+>Money Balance	Safety Stock	Low Stock	Order
52457	RAMBUTAN	1/1/2016	914.726	3	kg	2.250	912.476	0	15.000	0	0.000
24587	MANGOSTEEN	1/2/2016	30.705	3	kg	0.000	30.705	0	125.000	1	94.295
54875	GRAPES	1/3/2016	853.316	2	pcs	5.000	848.316	0	150.000	0	0.000
24578	KALE	1/4/2016	1737.337	3	kg	6.250	1731.087	0	230.000	0	0.000
22564	KOHLRABI	1/5/2016	621.358	3	kg	0.000	621.358	0	290.000	0	0.000
25578	LETTUCE	1/6/2016	505.379	2	pcs	4.250	501.129	0	50.000	0	0.000
24567	LOTUS ROOT	1/7/2016	5.005	3	kg	0.000	5.005	0	30.000	1	24.995
24578	MELON	1/8/2016	273.421	3	kg	4.247	269.174	0	500.000	1	230.826
24526	MUSHROOMS	1/9/2016	6157.442	2	pcs	2.254	6155.188	0	600.000	0	0.000
24756	APPLES	1/10/2016	7041.463	3	kg	0.000	7041.463	0	758.000	0	0.000
21475	CASHEWS	1/11/2016	7925.484	3	kg	0.000	7925.484	0	704.000	0	0.000

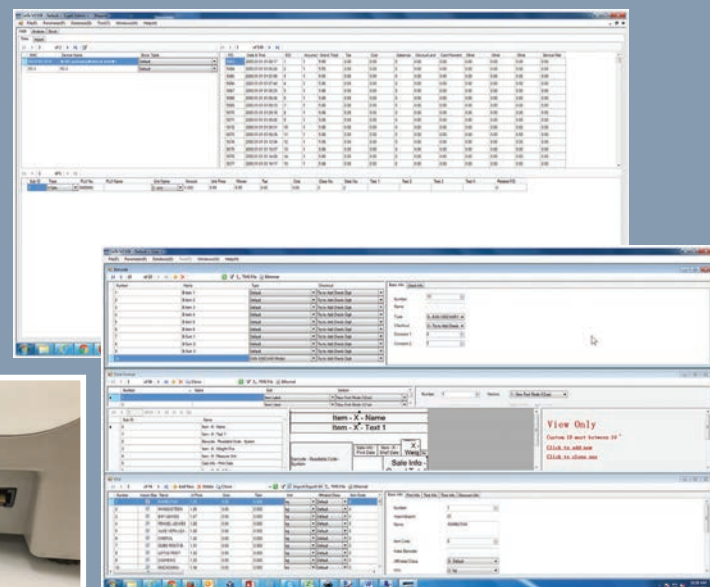
Customize your menus: possibility to hide data fields and create streamlined PLU data entry.

LE3k Software

- ✓ Programming simplified: All PLU data on a single screen
- ✓ Detailed reporting

Communications

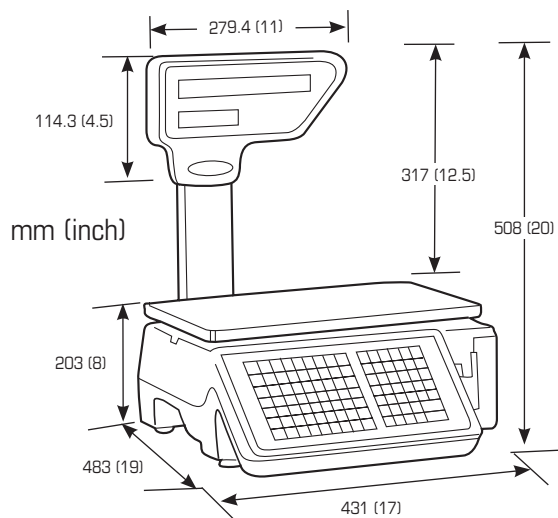
- ✓ TCP/IP – DHCP is enabled by default
- ✓ USB key – transfer speed 3000 PLU per minute
- ✓ WI-FI



KILOTECH

Product Number	851340
Product Name	LE.3k
Capacity & Graduation	Dual Interval 0-15 kg x 5 g & 15-30 kg x 10 g 0-30 lb x 0.01 lb & 30-60 lb x 0.02 lb
Weighing Modes	kg / lb
Pricing Units	\$/kg , \$/100g, \$/lb, pcs
Display	Pole mounted, window displays including 4 LED screens and a dot matrix text screen for PLU descriptions
Display Digit	4 digit Tare / 5 digit Weight / 6 digit Unit Price / 6 digit Total Price
Max PLU	6500 PLUs (maximum 875 characters per PLU)
Printer	Direct Thermal Print
Barcode Formats	EAN 13, EAN 8, UPC A, UPC E, EA -128 C, Customized by Authorized Dealer: QR, ITF25, PDF 417, EAN -128, EAN 28 char mode. 20 preprogrammed barcodes: ability to customize your own.
Image Formats	Maximum 15 images compatible with all common image files: BMP, JPEG, TFT, etc.. Customized by Authorized Dealer
Speed Keys	126 with shift key, 63 without shift key
Label Format	13 formats including 1 Nutritional Facts Label (1 CDN, 1 USA), 3 size gap labels and store up to 32 modified (customized) label formats. Many more size options available for customized labels Programmed by your Authorized Dealer
Interfaces	USB (data transfer only), WI-FI, Ethernet and serial port
Power Supply	21 V DC, AC adapter
Product Dimensions	43 cm x 48 cm x 51 cm / 17 x 19 x 20 "
Platter Size	15.5 x 10" / 39 x 25 cm
Operating Temperature / Humidity	0°C - 40°C / 50°F - 104°F <60% RH non condensing 15% -85% Relative humidity non condensing
Product Weight	22 lb / 10 kg
Dimensional Weight	27 lb / 12.5 kg
Warranty	2 year

Approved by Measurement Canada AM5818 rev. 2 and NTEP CC 11-066



www.kilotech.com
KILOTECH
 Accredited by Measurement Canada

Specifications subject to change without prior notice
 MAR120418

