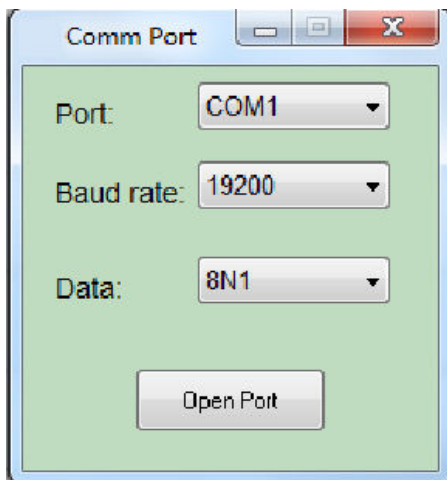
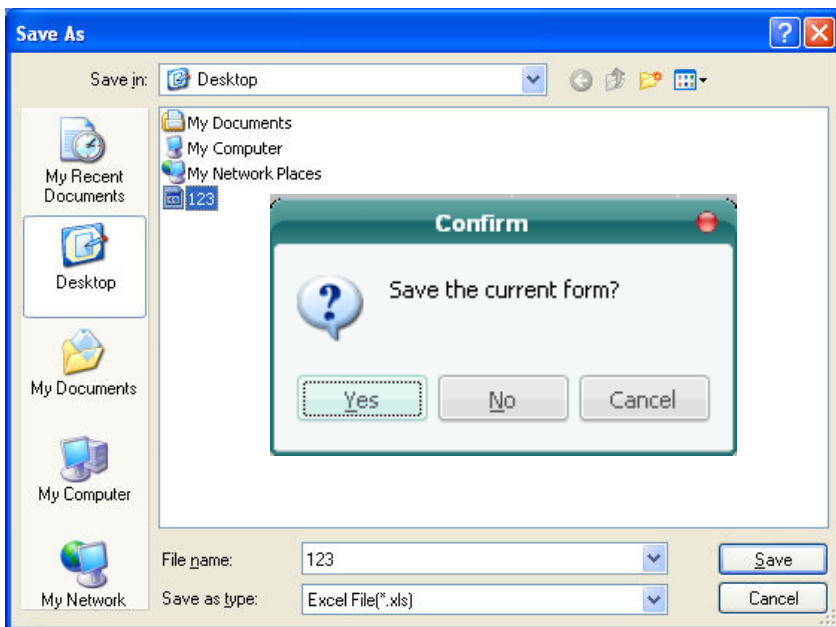


2. Software searches all serial ports on PC, and tries to connect with the scale. In the Status bar, it will separately display present serial port, baud rate, data format. Take the following figure for example, “COM2, 2400 ,8N1” refers to the present serial port COM2, baud rate 2400, data format 8N1. If the connection status displays “Connecting the scale”, it means the Software is searching your scale, if it displays “The scale is connected”, it means the Host has been connected with the scale.

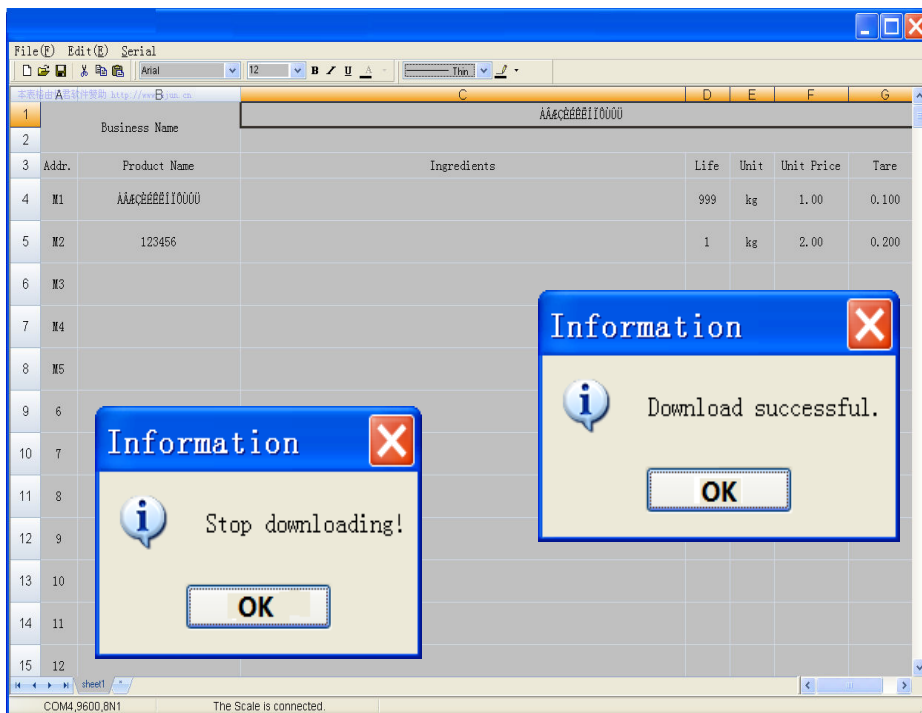
3. The Software can search all the present serial ports automatically, until connect with the scale. Manual connection is also available by use “Serial Set” in “Serial” menu.



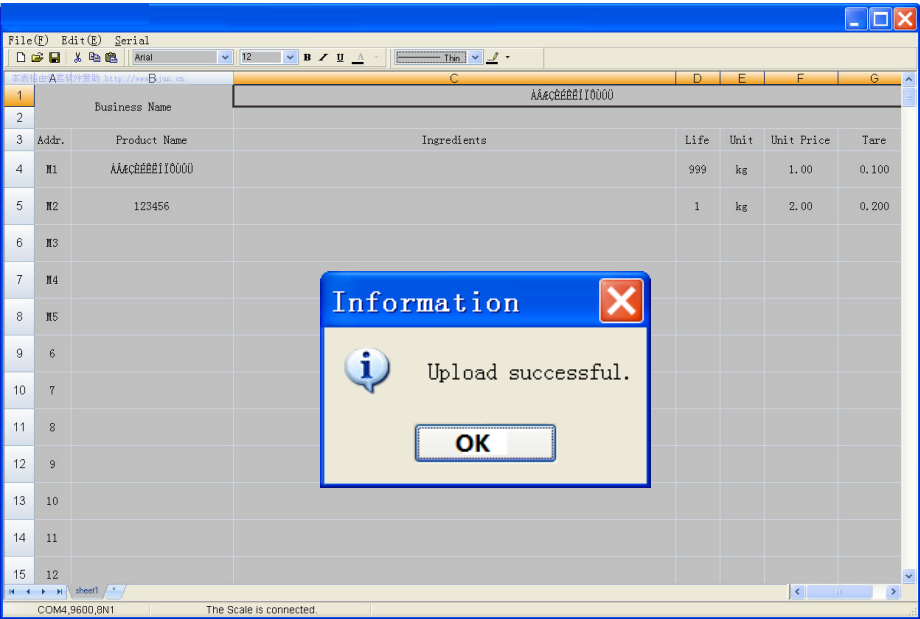
4. Press “Open” or “open file” button in “File” menu, it will first remind you whether to save the current file, and then open the file and dialogue box to choose and open the right file.



5. Choosing "Down Load" in "Serial" menu or F8, the scale will display "DNLOAD", the status bar will display the present download information, if it displays "downloading business name", means it's downloading the store name. If it displays "Downloading Mxx", means it's downloading the information of M1~M5/M55. If it displays "Downloading No. xxx", means it's downloading the information of PLU001~265. "Download successful" will be displayed after downloading finished. During downloading, using "Serial\Download\Stop" or F9 can stop down load PLU.



6. Choose “Upload” in “Serial” menu, the scale will display “UPLOAD”. the status bar will display the present upload information, if it displays “uploading business name”, it means it is uploading the store name. If it displays “uploading Mxx”, it means it is uploading the information of M1~M5. If it displays “uploading No. xxx”, it means it is uploading the information of PLU001~265. “Upload successful” will be displayed after uploading finished.



7. Date and Time setting

Choose "Pair" in "Serial" menu to open the date and time setting dialogue box, it will display the system clock of PC, press "Confirm" or exit the dialogue box directly. After the software send date and time setting data to the scale, it will display "Pair successful."

