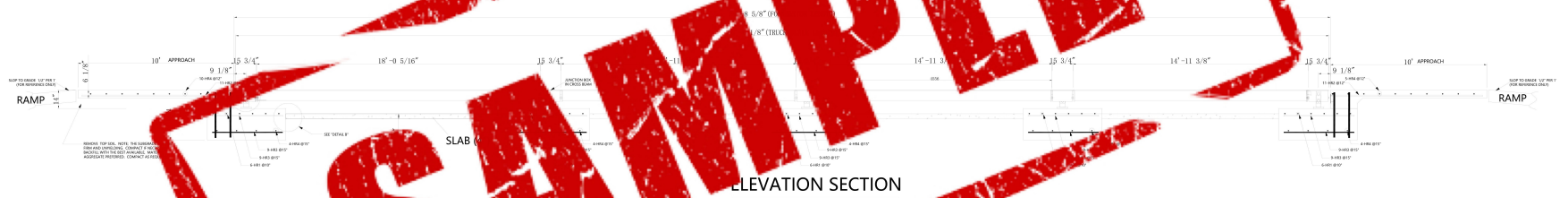


N.I.S.T. H-44 REQUIRES THAT ON THE APPROACH ENDS OF THIS VEHICLE SCALE, THERE SHALL BE A STRAIGHT APPROACH NOT LESS THAN 10 FEET. ANY SCORING IN THE REMAINING PORTION OF THE APPROACH SHALL REQUIRE READ OF VEHICLE ACCESS, BASIS FOR TESTING PURPOSES, AND DRAINAGE AWAY FROM THE SCALE.

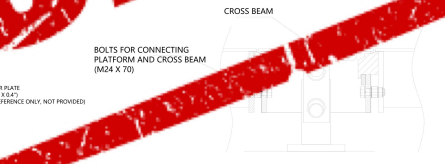
PLAN VIEW



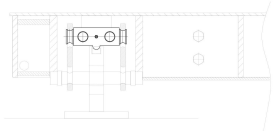
ELEVATION SECTION



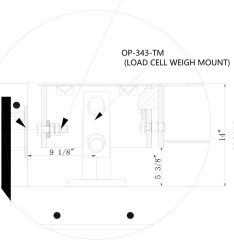
END WALL DETAIL



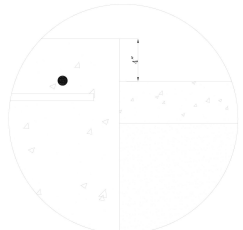
PLAN CONNECTION DETAIL



LOAD CELL ASSEMBLY DETAIL



DETAIL A



DETAIL B

FOUNDATION REINFORCING BAR SCHEDULE  
ASTM A615 GRADE 60 (FOR REFERENCE ONLY)

| MARK      | NO. REQ'D | SIZE | LENGTH | WT.(lb). |
|-----------|-----------|------|--------|----------|
| HR1       | 30        | #6   | 12'-0" | 594      |
| HR2       | 22        | #4   | 10'-6" | 140      |
| HR3       | 90        | #4   | 4'-6"  | 270      |
| HR4       | 45        | #4   | 12'-0" | 410      |
| VR1       | 52        | #4   | 3'-0"  | 108      |
| TOTAL WT: |           |      |        | 1522     |

FOUNDATION CONCRETE REQUIREMENTS  
f<sub>c</sub>=4000 P.S.I (FOR REFERENCE ONLY)

| AREA           | QUANTITY   |
|----------------|------------|
| PIERS AS SHOWN | 16.0 CU.YD |
| APPROACHES     | 6.5 CU.YD  |
| SLAB (4")      | 5.4 CU.YD  |
| TOTAL          | 27.9 CU.YD |

REINFORCING STEEL NOTES:  
1. REINFORCING STEEL SHALL BE FREE OF ALL MUD, DEBRIS, CEMENT GROUT, LOOSE RUST, GREASE, AND OIL.  
2. TACK WELDING OF BARS IS PROHIBITED.

- NOTES:
- FOUNDATION SHOWN IS DESIGNED FOR SOILS WITH A MINIMUM BEARING CAPACITY OF 4000 PSF AND ADEQUATE DRAINAGE. IF SOIL CONDITIONS DO NOT MEET THESE REQUIREMENTS, ADJUST FOUNDATION OR SOIL CONDITIONS AS REQUIRED.
  - IN AREAS WHERE THERE IS SEVERE FREEZING, INCREASE THE DEPTH OF THE FOUNDATION SO THAT THE BOTTOM EXTENDS BELOW THE FROST LINE, OR PROVIDE A MINIMUM OF 12" FREE DRAINING GRANULAR MATERIAL TO PREVENT FROST HEAVE.
  - N.I.S.T. H-44 REQUIREMENTS AND LOCAL WEIGHTS AND MEASURES REGULATIONS MAY REQUIRE INSTALLATION PARAMETERS SOMEWHAT DIFFERENT THAN ILLUSTRATED ON THIS PLAN. IN ORDER TO INSURE COMPLIANCE, CONSULT THE LOCAL WEIGHTS & MEASURES OFFICE PRIOR TO CONSTRUCTION.
  - REFER TO SCALE MANUAL FOR INSTALLATION AND OPERATION INSTRUCTIONS.