



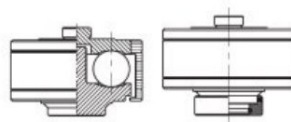
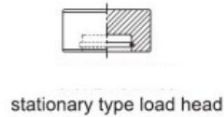
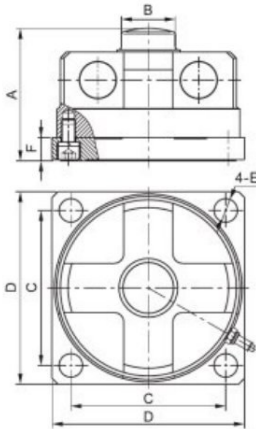
GF-11A

BRIDGE LOAD CELL

Materials: Alloy Steel



Cross-Bridge load cell is the patent of Zhejiang South-Ocean ; Stronger four-direction side force resistance and overload protection capability Moistureproof seal, ideal for hostile environment ; Simple to install good interchangeability ; With triple ball, more suitable for various truck scale hopper scale, railroad ,etc ; Load cell body and the bottom plate are fixed with a bolt, this structure is more suitable in the calibration of scale without calibration



Specifications

Rated Output(mV/V)	2.00±0.005
Nonlinearity	±0.02%FS
Hysteresis	±0.02%FS
Repeatability	±0.01%FS
Creep(30minutes)	±0.02%FS/10
Zero Balance	±1.00%FS
Temperature Effect on Zero	±0.02%FS/10
Temperature Effect on Output	±0.02%FS/10
Input Resistance(Ω)	765±15
Output Resistance(Ω)	700±5
Insulation Resistance	≥5000MΩ
Excitation Voltage	10V(DC/AC)
Compensated Temperature Range	-10℃~+50℃
Operating Temperature Range	-20℃~+60℃
Safe Overload	120%FS
Cable	φ5.4×12m

Main Dimensions and Accessories

Capacity	Size mm						
	t	A	B	C	D	E	F
10-40	104.0	40.0	124.0	150.0	20.0	20.0	76.0
50-70	113.0	46.0	132.0	164.0	20.0	20.0	85.0
100	142.0	48.5	156.0	200.0	21.0	35.0	120.0
150-200	175.0	80.0	200.0	260.0	36.0	30.0	250.0