

DHM14H

DIGITAL ROCKER COLUMN LOAD CELL



**New load cell for truck scales
innovative and patented product**

DHM14H_datasheet_v01_r2 - 18/04/2024

Technical review: Loui Oriqui | Comercial review: Eber Santos

Editor: Stephany



DHM14H

DIGITAL ROCKER COLUMN LOAD CELL

Integrated anti-drop and anti-rotation system, with easy installation and maintenance of the weighing structure.

CLASSIC DESIGN WITH ADVANCED SAFETY FEATURES

- High precision and long-term stability
- All-in-one loading structure allows for easy installation and replacement
- As an integrated structure, this cell addresses common issues of anti-drop and anti-rotation found in compression cells.

PERFECT COMPATIBILITY AND EASY INSTALLATION

- Meets various installation requirements, such as the need for a high-strength structure and space limitations between load cells.
- Easy maintenance and replacement, allowing for time and cost savings on maintenance, ensuring excellent cost-effectiveness.

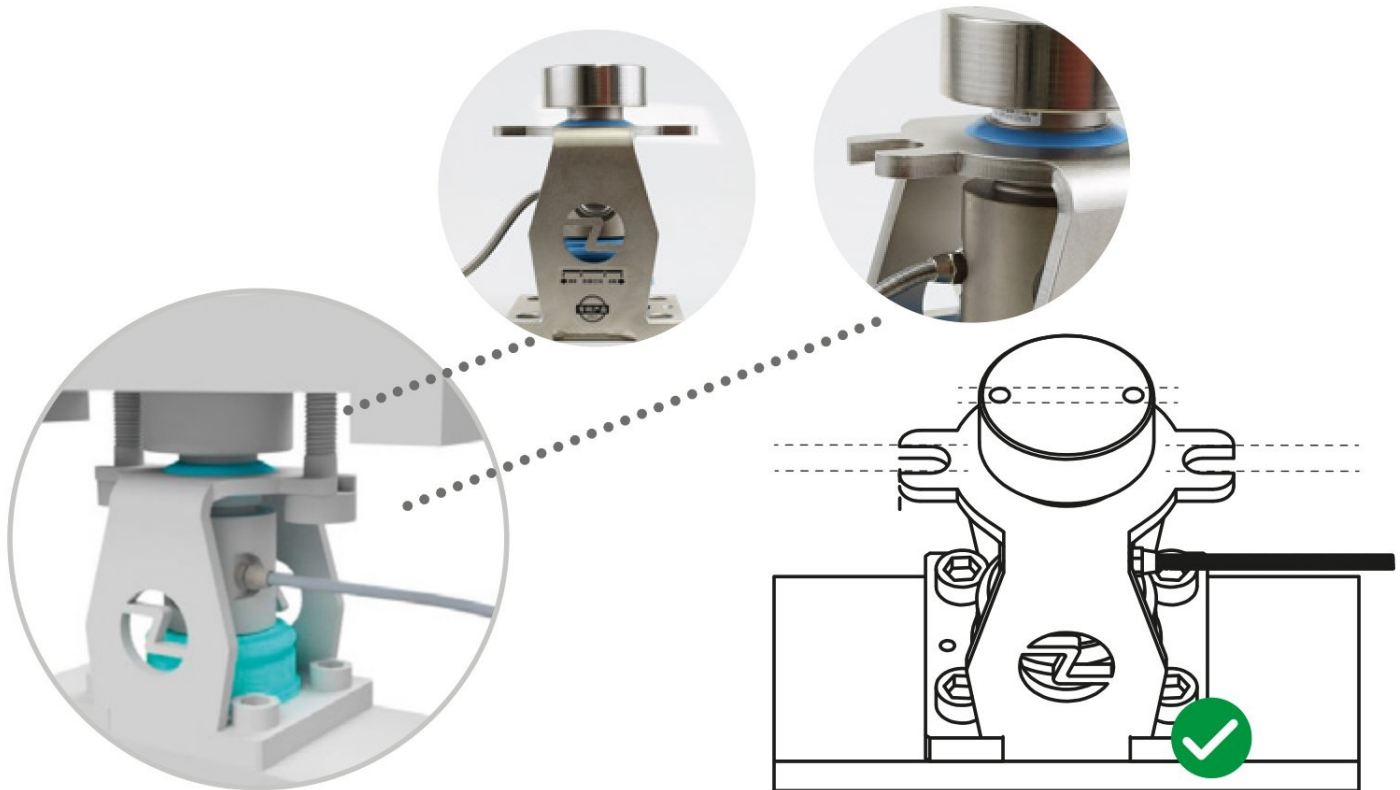
STABILITY AND SAFETY

Proper installation ensures better performance of the scale over time, prolongs the load cell's lifespan, and also reduces the need for weighing system maintenance.

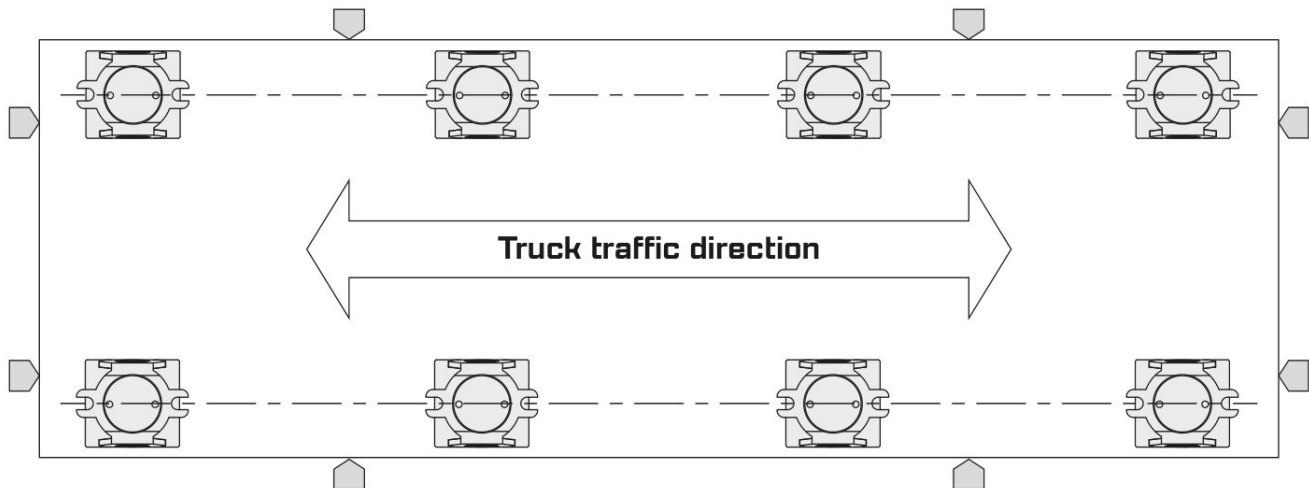


ANTI-ROTATION & ANTI-DROP

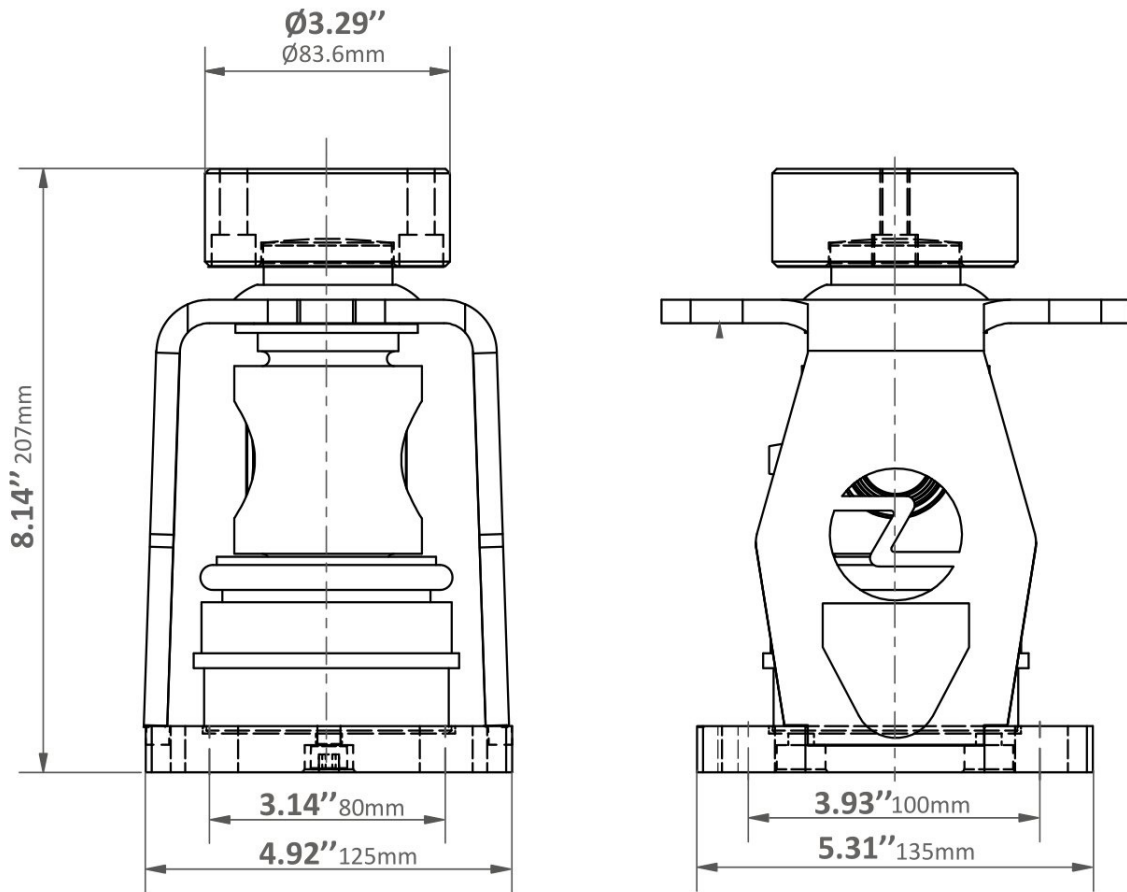
The DHM14H load cell features two U-shaped lateral grooves on its upper part, which can be used to assist in securing the cell to the scale and prevent dropping. This system also prevents the rotation of the cell and load, extending the lifespan of the system.



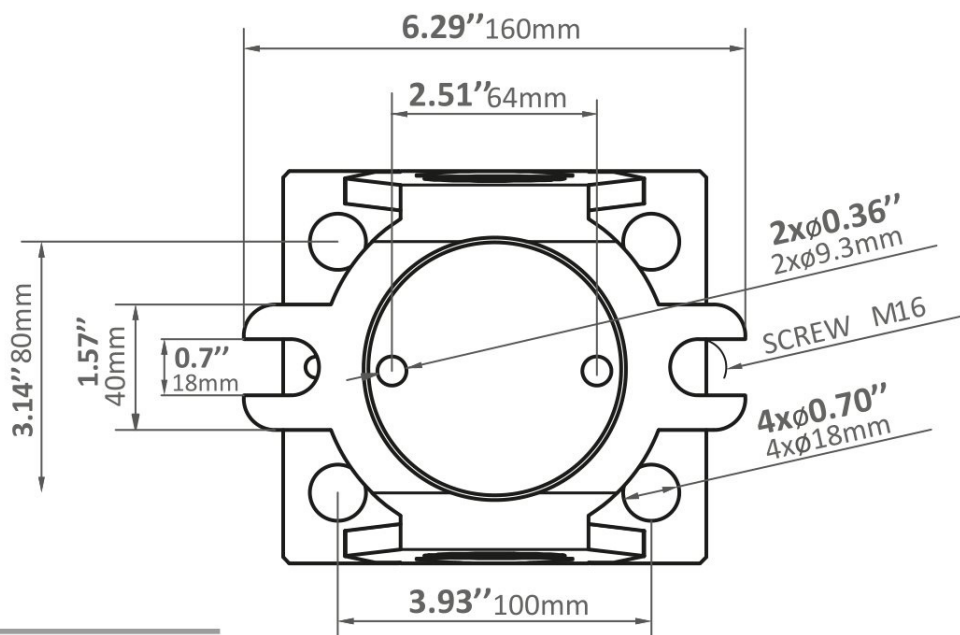
The direction of the anti-rotation grooves and the nuts should follow the direction of the truck traffic.



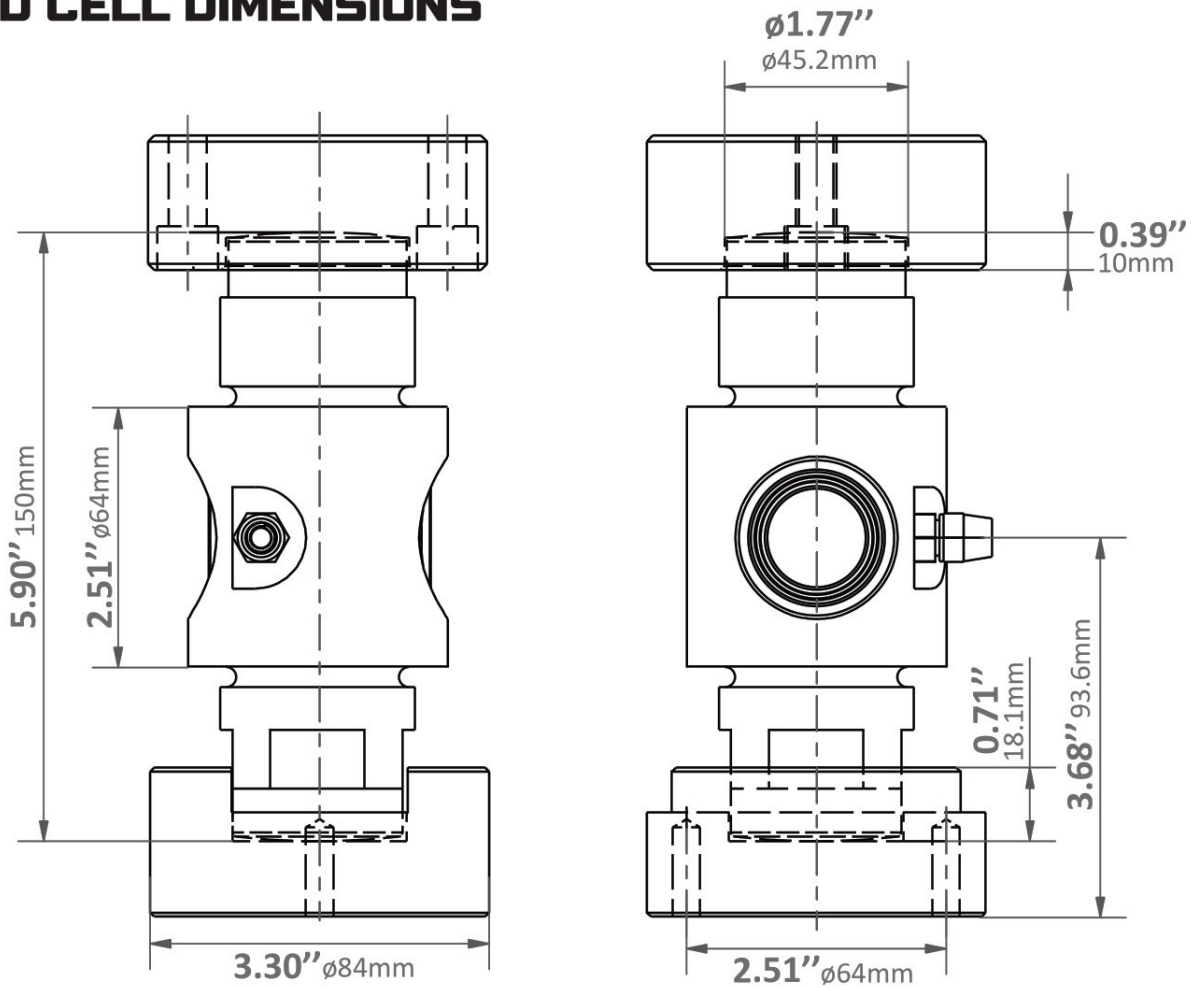
DIMENSIONS (full kit)



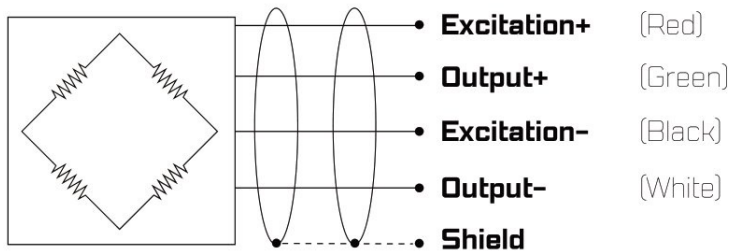
DIMENSIONS (fastening)



LOAD CELL DIMENSIONS



CABLE DIAGRAM



SPECIFICATIONS

Maximum capacity (E _{max})	t	40
Accuracy class		C3
Rated output	d	1000000 ± 1000
Creep error	%F.S/30min	± 0.025
Repeatability	%F.S	± 0.02
Zero output	d	± 500
Temperature effect on zero balance	%F.S /10°C	± 0.02
Temperature effect on sensitivity	%F.S /10°C	± 0.011
Communications interfaces		RS485
Compensated temperature	°C	-10 to +40
Operating temperature	°C	-30 to +70
Excitation, recommended voltage	V	9 to 36
Safe overload	%FS	120
Ultimate overload	%FS	150
Element material		Alloy steel
Surface treatment		Nickel plated
Ingress protection		IP68

PART NUMBER

Product	Capacities	Codes
DHM14H	40t	14026

FIND US

3915 W Hacienda Ave Suite A117 Las Vegas, NV 89118

sales@usameasurements.com

usameasurements.com

Technical Support (800) 917-7205

Sales: (800) 917-7205